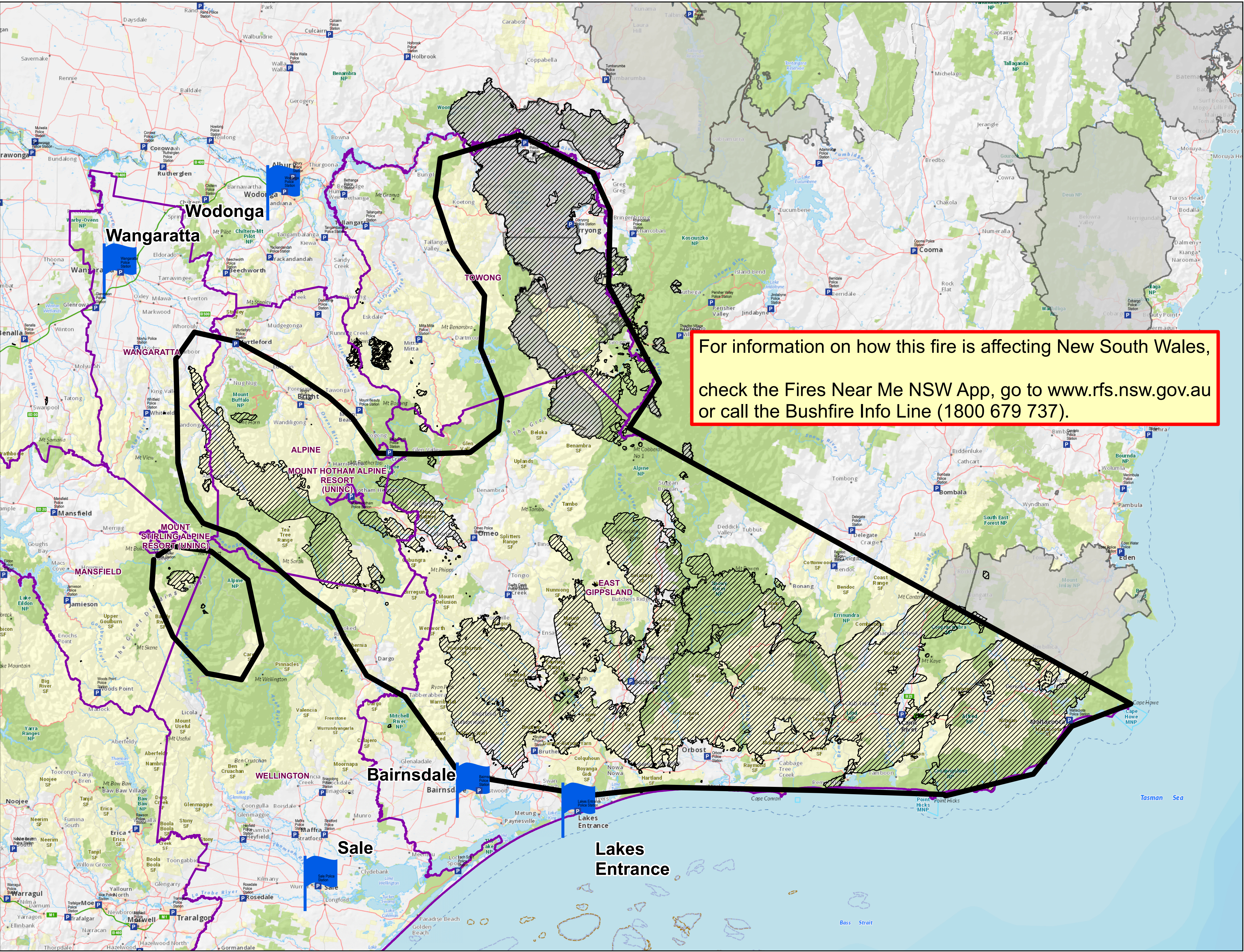







# NE and East Gippsland Fires - Potential Impact Area from 9th Jan until 11th Jan 1800 hrs



For information on how this fire is affecting New South Wales, check the Fires Near Me NSW App, go to [www.rfs.nsw.gov.au](http://www.rfs.nsw.gov.au) or call the Bushfire Info Line (1800 679 737).

-  Police station
-  Key Locations
-  Fire Spread Predictions
-  Local Government Areas
-  Current Victoria Burnt Area

The potential impact area identifies an area that is likely to be impacted by potential fire fronts moving into communities, spot fires and ember attacks, thick smoke or fire closing major roads and isolating communities.

Check warnings. If you are in an area under a warning follow the instructions in the warning.

