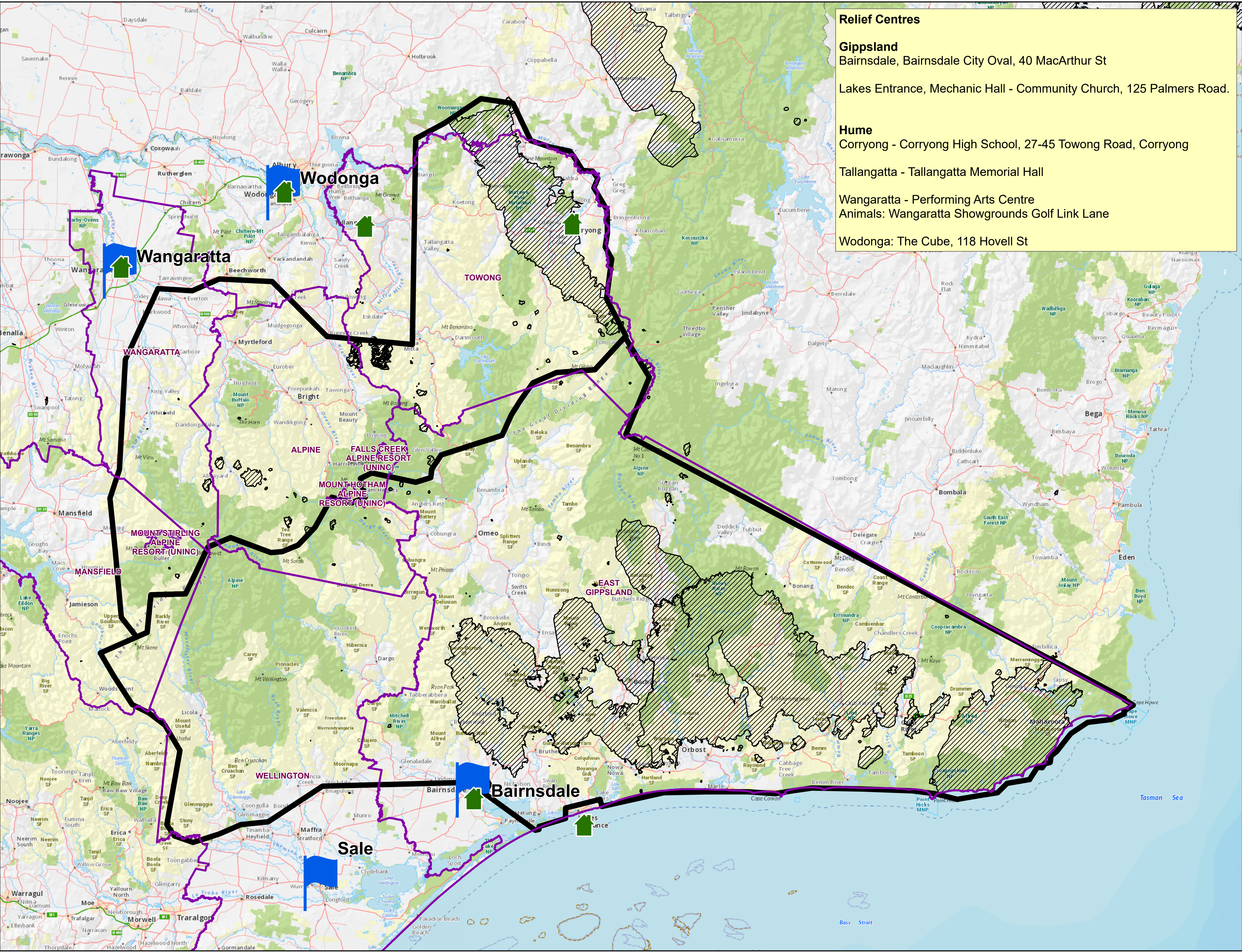







NE and East Gippsland Fires - Potential Impact Area from 2nd January until Midnight 4th January



-  Relief Centre
-  Key Locations
-  Local Government Areas
-  Potential Impact Zone
-  Current Burnt Area

The potential impact area identifies an area that is likely to be impacted by potential fire fronts moving into communities, spot fires and ember attacks, thick smoke or fire closing major roads and isolating communities.

Check warnings. If you are in an area under a warning follow the instructions in the warning.

