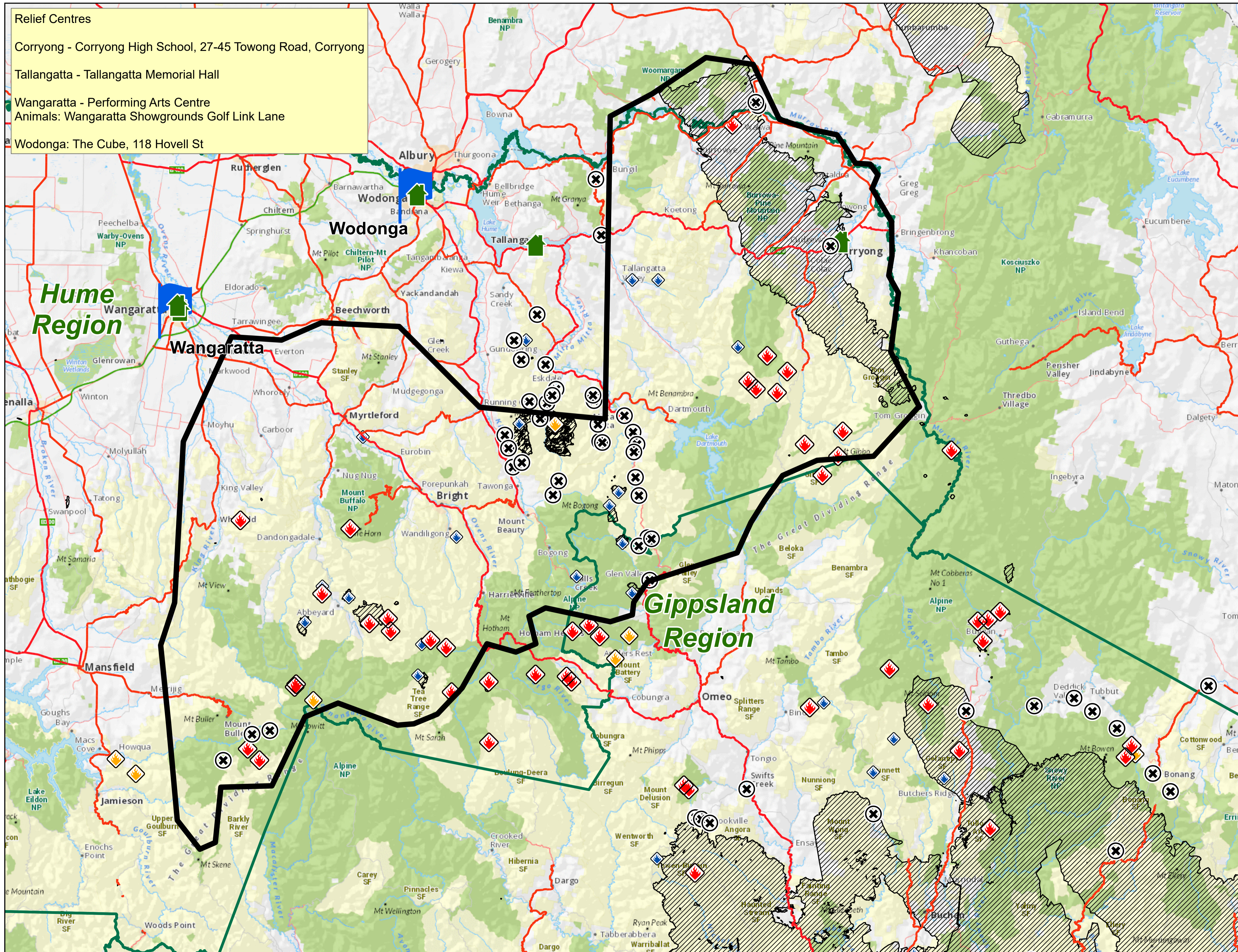


North East Fires - Potential Impact Area from 2nd January until Midnight 4th January



Relief Centres

Corryong - Corryong High School, 27-45 Towong Road, Corryong

Tallangatta - Tallangatta Memorial Hall

Wangaratta - Performing Arts Centre
Animals: Wangaratta Showgrounds Golf Link Lane

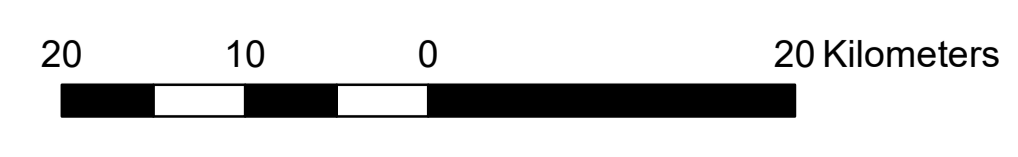
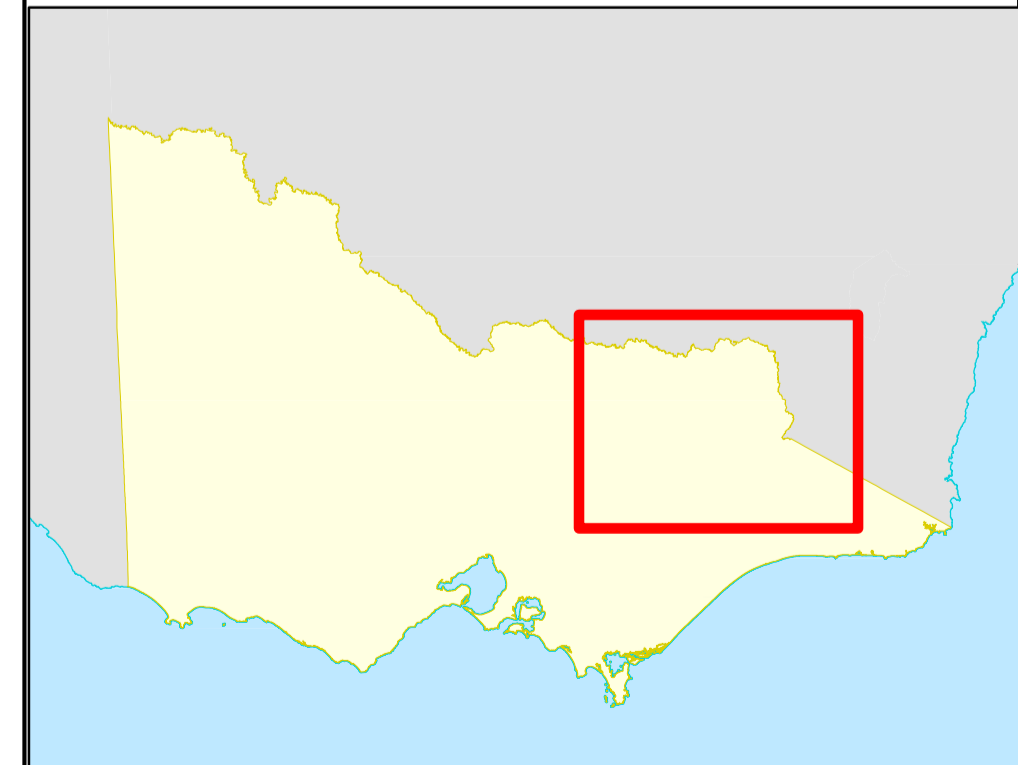
Wodonga: The Cube, 118 Hovell St

- Potential Impact Zone
- Traffic Management Point
- Relief Centre
- Key Locations

- Fires**
- Going
 - Contained
 - Under Control
 - Current Burnt Area

The potential impact area identifies an area that is likely to be impacted by potential fire fronts moving into communities, spot fires and ember attacks, thick smoke or fire closing major roads and isolating communities.

Check warnings. If you are in an area under a warning follow the instructions in the warning.



Disclaimer:
This map is a snapshot generated from Victorian Government data. The State of Victoria does not guarantee that the publication is without flaw of any kind or is wholly appropriate for your particular purposes and therefore disclaims all liability for error, loss or damage which may arise from reliance upon it. All persons accessing this information should make appropriate enquiries to assess the currency of the data.